

# Fledermaus-Quadrille

4-Reiher - Mollbasssystem

Johann Strauß, Op. 363

--- a A b B c C d D ---
--- A <sup>2</sup> b <sup>2</sup> B <sup>2</sup> c <sup>2</sup> C <sup>2</sup> d <sup>2</sup> D <sup>2</sup> ---

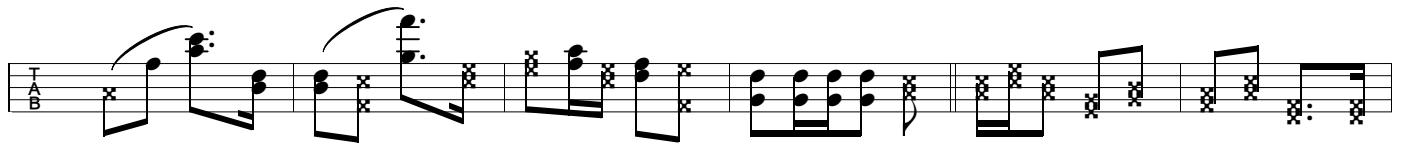
## 1. Tour: Le Pantalon



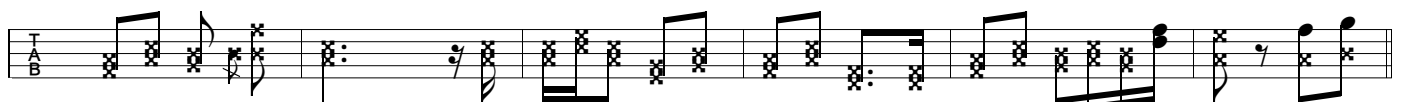
C c D d C c C c C c D d C c B c C c D d C c C c



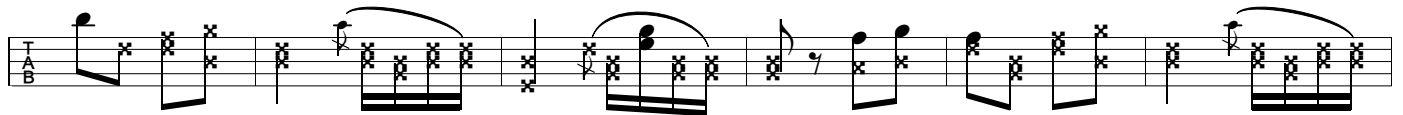
C c D d C ♯ Cc ♯ B b B b B b B b B b B b B b B b



z C<sup>2</sup> ♯ B<sup>2</sup> ♯ C<sup>2</sup> c<sup>2</sup> B b B b Bb ♯ C c D d C c C c



C c D d C c C c C c D d C c C c C c D d Cc ♯ z



C f D d D d C d C d D d D d D d C d D d D d D<sup>2</sup> d



D<sup>2</sup> d<sup>2</sup> D d D ♯ Cc

Satz Franz Fuchs  
Buchberggasse 63  
A 3400 Klosterneuburg  
franz.fuchs@stammtischmusik.at

# Fledermaus-Quadrille

4-Reiher - Mollbasssystem

Johann Strauß, Op. 363

--- a A b B c C d D ---
--- A <sup>2</sup> b <sup>2</sup> B <sup>2</sup> c <sup>2</sup> C <sup>2</sup> d <sup>2</sup> D <sup>2</sup> ---

## 2. Tour: L'Été



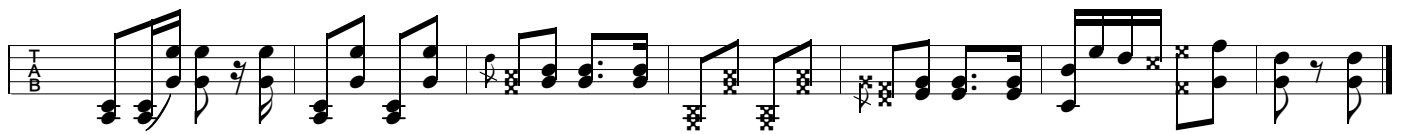
B<sup>2</sup> a A a A a D<sup>2</sup> a B<sup>2</sup> a A a A a D<sup>2</sup> a B<sup>2</sup> a A a



A a D<sup>2</sup> a B<sup>2</sup> a A a A γ Aa γ B b B c C<sup>2</sup> c<sup>2</sup> B<sup>2</sup> e A b B b



B b B<sup>2</sup>b C c C<sup>2</sup>c C<sup>2</sup> c<sup>2</sup> B<sup>2</sup>c<sup>2</sup> A b B b B γ Bb γ B b B c



C<sup>2</sup> c<sup>2</sup> B<sup>2</sup> c<sup>2</sup> A b B b B b B<sup>2</sup>b C c C<sup>2</sup>c C<sup>2</sup> c<sup>2</sup> B<sup>2</sup> c<sup>2</sup> A b B b B γ Bb

D.C. viermal, dann al Fine

Satz Franz Fuchs  
Buchberggasse 63  
A 3400 Klosterneuburg  
franz.fuchs@stammtischmusik.at

# Fledermaus-Quadrille

4-Reiher - Mollbasssystem

Johann Strauß, Op. 363

--- a A b B c C d D ---
--- A <sup>2</sup> b <sup>2</sup> B <sup>2</sup> c <sup>2</sup> C <sup>2</sup> d <sup>2</sup> D <sup>2</sup> ---

## 3. Tour: La Poule

Tablature:  $\zeta \ \gamma \ \zeta \ \gamma \ \zeta \ \gamma \ \zeta \ \gamma \ B \ \gamma \ b \ B \ \gamma \ b \ B \ \gamma \ b \ B \ \gamma \ b$

Tablature:  $B \ \gamma \ b \ B \ \gamma \ b \ B \ \gamma \ b \ B \ \gamma \ b \ C \ \gamma \ c \ C \ \gamma \ c \ C \ \gamma \ c \ C \ \gamma \ c \ C^2 \ \gamma \ c^2 B \ \gamma \ b$

Fine

Tablature:  $B \ \zeta \ B \ \zeta \ A \ \gamma \ a \ A \ \gamma \ a \ B \ \gamma \ b \ B \ \gamma \ b \ A \ \gamma \ a \ A \ \gamma \ a$

Tablature:  $A \ \gamma \ a \ A \ \gamma \ a \ A \ \gamma \ a \ A \ \gamma \ a \ B \ \gamma \ b \ B \ \gamma \ b \ A \ \gamma \ a \ A \ \gamma \ a$

Tablature:  $A \ \gamma \ \zeta \ \gamma \ B \ \gamma \ b \ B \ \gamma \ b \ B \ \gamma \ b \ B \ \gamma \ b \ B \ \gamma \ b \ B \ \gamma \ b$

Tablature:  $B \ \gamma \ b \ B \ \gamma \ b \ C \ \gamma \ c \ C \ \gamma \ c \ C \ \gamma \ c \ C \ \gamma \ c \ C^2 \ \gamma \ c^2 B \ \gamma \ b \ B \ \zeta \ B \ \zeta$

Tablature:  $A \ \gamma \ a \ B^2 \ \gamma \ b^2 \ B^2 \ \gamma \ b^2 \ B^2 \ \gamma \ b^2 \ A \ \gamma \ a \ A \ \gamma \ a \ A \ \gamma \ a \ A \ \gamma \ a \ A \ \gamma \ a \ B^2 \ \gamma \ b^2$

Tablature:  $B^2 \ \gamma \ b^2 \ B^2 \ \gamma \ b^2 \ A \ \gamma \ a \ A \ \gamma \ a \ A \ \zeta$

viermal D.S., dann al Fine

Satz Franz Fuchs  
Buchberggasse 63  
A 3400 Klosterneuburg  
franz.fuchs@stammtischmusik.at

# Fledermaus-Quadrille

4-Reiher - Mollbasssystem

Johann Strauß, Op. 363

## 4. Tour: La Pastourelle

--- a A b B c c d D ---  
--- A² b² B² c² C² d² D² ---

Musical notation for the first system of 'La Pastourelle'. The staff is in 2/4 time with a key signature of one flat (Bb). The notation includes a treble clef, a bass clef, and a 'TAB' label. The notes are: Bb, C, C, Bb, Bb, Bb, Bb, C, C, Bb.

B b C c B b B b B b C c B b

Musical notation for the second system of 'La Pastourelle'. The staff is in 2/4 time with a key signature of one flat (Bb). The notation includes a treble clef, a bass clef, and a 'TAB' label. The notes are: Bb, Bb, Bb, Bb, Bb, Bb, Bb, C, C, Bb, Ab, Bb, Bb, Bb.

B b B b B b Bb B b B² b C c B c A b B b B b B b

Musical notation for the third system of 'La Pastourelle'. The staff is in 2/4 time with a key signature of one flat (Bb). The notation includes a treble clef, a bass clef, and a 'TAB' label. The notes are: Bb, B²b, C, C, Bc, Ab, Bb, Bb, Bb, Bb, Bb, Bb, Bb, Bb.

B b B²b C c B c A b B b B b Bb B b B b B b B b B b B b

Musical notation for the fourth system of 'La Pastourelle'. The staff is in 2/4 time with a key signature of one flat (Bb). The notation includes a treble clef, a bass clef, and a 'TAB' label. The notes are: Bb, Bb, Aa, Aa, Aa, Aa, Bb, Bb, Bb, Bb, Bb, B²b, C, C, Bc.

B b B b A a A a A a A a B b B b B b B b B b B²b C c B c

Musical notation for the fifth system of 'La Pastourelle'. The staff is in 2/4 time with a key signature of one flat (Bb). The notation includes a treble clef, a bass clef, and a 'TAB' label. The notes are: Ab, Bb, Bb, Bb, Bb, B²b, C, C, Bc, Ab, Bb, Bb.

A b B b B b B b B b B²b C c B c A b B b Bb

D.C. viermal, dann al Fine

Satz Franz Fuchs  
Buchberggasse 63  
A 3400 Klosterneuburg  
franz.fuchs@stammtischmusik.at

# Fledermaus-Quadrille

4-Reiher - Mollbasssystem

Johann Strauß, Op. 363

--- a A b B c C d D ---  
--- A² b² B² c² C² d² D² ---

## 5. Tour: Finale

ζ ζ ζ γ γ B b A b A b B b A b B b B b A b

B b A b A b B b A b B b B γ ζ B b A b A b B b A b B b

B b A b B b A b A b B b A b B b B γ Bb γ C c B c C c B c

C d C d C c B c C c B c B c C c B c C c C c B c C c B c

C c B c C d C d C c B c C c B c B c C c B c C c C γ Cc

viermal D.S., dann al Fine

Satz Franz Fuchs  
Buchberggasse 63  
A 3400 Klosterneuburg  
franz.fuchs@stammtischmusik.at