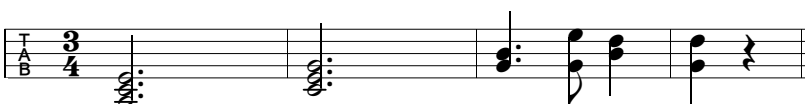


Marchfelder Landler

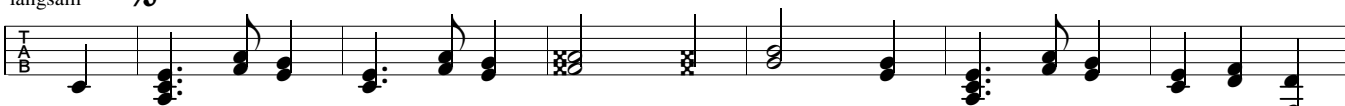
mit Zwischenwalzer


Griffschrift 3-Reiher

E 
B — — B — — B B² A B †

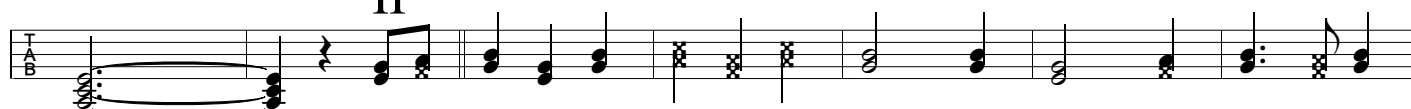
langsam




I 
‡ B b b B b b C c c B b b B b b B b b

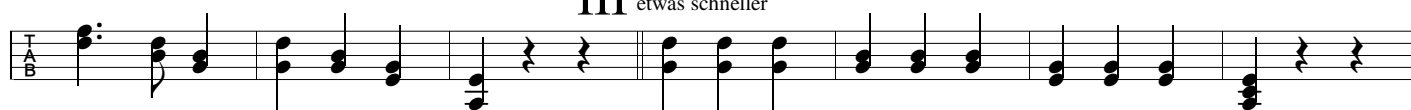

B b b B b b B b b B b b C c c B b b B b b B b b


II


B b b B † † B b b C c c B b b A b b B b b



A b b A b b B b b A b b B b b B b b A b b A b b

III etwas schneller


B B² A B A B² B † † B b b A b b B b b A b b


B b b A b b A b b B b b A b b B b b A b b

IV

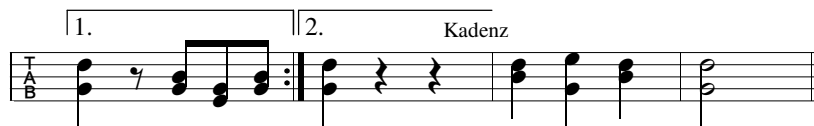

B b b A b b B B² A B A B² B † † B b b

Marchfelder Landler

mit Zwischenwalzer



B b b B b b B b b B b b B b b B b b



B z z B b b B B² A B z

Walzer nach dem 1. Durchgang



z B b b A b b A b b B b b A b b B B² A



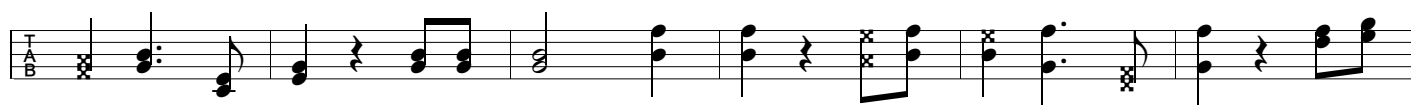
Vom Segno bis zur Kadenz, dann Walzer 2

B A B² B z z

Walzer nach dem 2. Durchgang



z B b b A b b A b b B b b A b b B b b



B b b A b b B b b A b b A b b B b b



A b b B B² A B A B² B z z